



NoFloods™
By Environment Solutions



NOFLOODS FLEXGUARD

PRODUCT CATALOGUE
2025-2026

When Simplicity Meets Functionality



Table of Content

- 1 - Nofloods FlexGuard 2024-2025 2 - Features & Benefits
- 3 - Concept & components 4 - FlexGuard Models & Specifications
- 5 - Installation guide 6 - FlexGuard Positioning
- 7 - Applications 8 - Contact us



NoFloods FlexGuard

Minimal Effort Maximum Impact

We are pleased to introduce the NoFloods FlexGuard, an innovative and efficient solution for flood protection and water retention.

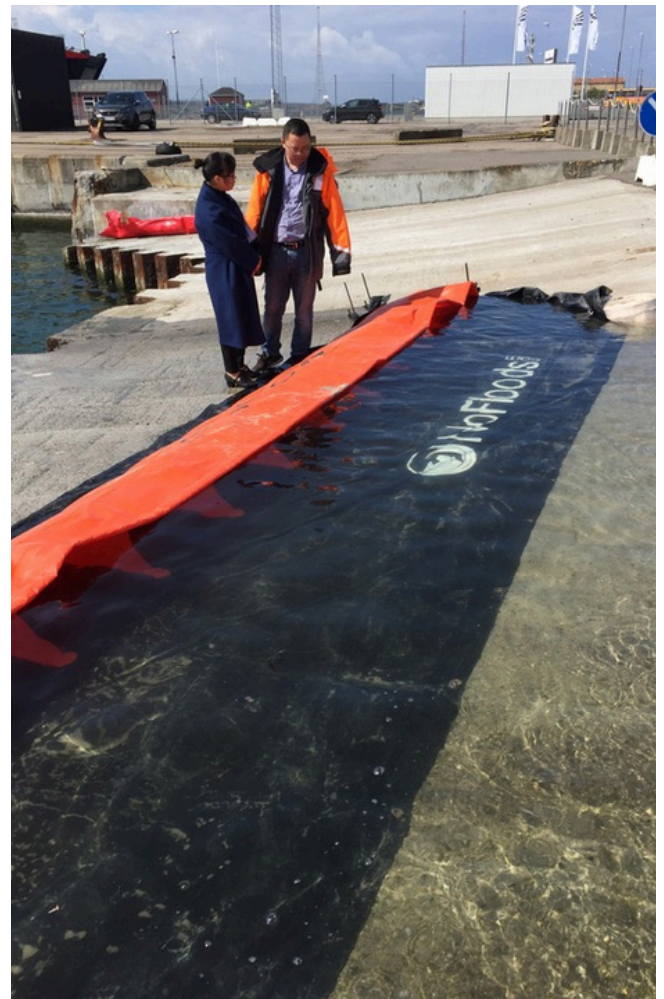
The FlexGuard's unique design uses the floodwater itself to anchor the barrier: as water flows into the FlexGuard, it stabilizes and automatically sets up as levels rise. For enhanced stability on various surfaces, an optional extension membrane can be attached to the front flap.



Explore the FlexGuard's features and see how it can provide a reliable solution for you.

The FlexGuard is fully reusable, extendable to cover large areas, and requires minimal storage space.

Available in a compact storage bag or a ready-to-deploy box for longer sections, the system is designed for easy, tool-free installation. For added stability in windy conditions, an optional weight belt can be attached to the front flap until the floodwater secures the barrier.



NoFloods FlexGuard

Features & Benefits



Easy Installation

The intuitive design and light weight allows for easy and rapid deployment. The NoFloods FlexGuard is simply rolled out and the water will do the rest. Shorter distances can easily be deployed by one man.



Sustainable

Due to the high quality PVC with UV protection the NoFloods FlexGuard is 100% reusable and can be deployed again and again.



Protection

The integrity of NoFloods FlexGuard ensures efficient protection against water. Technical studies in water retention indicate that a 1:2.5 ratio is generally sufficient for stability on surfaces like grass or asphalt. With a 1:4 ratio, the FlexGuard offers exceptional safety.



Optimised Storage

The smart design of the NoFloods FlexGuard ensures that the barrier takes up minimal storage space. The barriers can be easily stored in the specially designed storage bags or in customised “ready-to-deploy” storage boxes.



Sealing off Leakage

The NoFloods FlexGuard's design, featuring an additional friction mat and extension membrane, minimises seepage. These elements ensure a secure fit and preserve the barrier's integrity, delivering reliable protection even in complex configurations.



Fighting Water with Water

The NoFloods FlexGuard is securely anchored in place and stabilised by the pressure of the floodwater on the barrier. Increasing water height only further aids in stabilising the barrier adding pressure on both the bottom and vertical wall of the barrier.



Added Functionality

The NoFloods FlexGuard comes with a variety of extra features like the option to attach the NoFloods weight belt air valves at the top, allowing for extra air filling to enhance its buoyancy as well as a pocket for flashlights for increased visibility.



Easily extendable

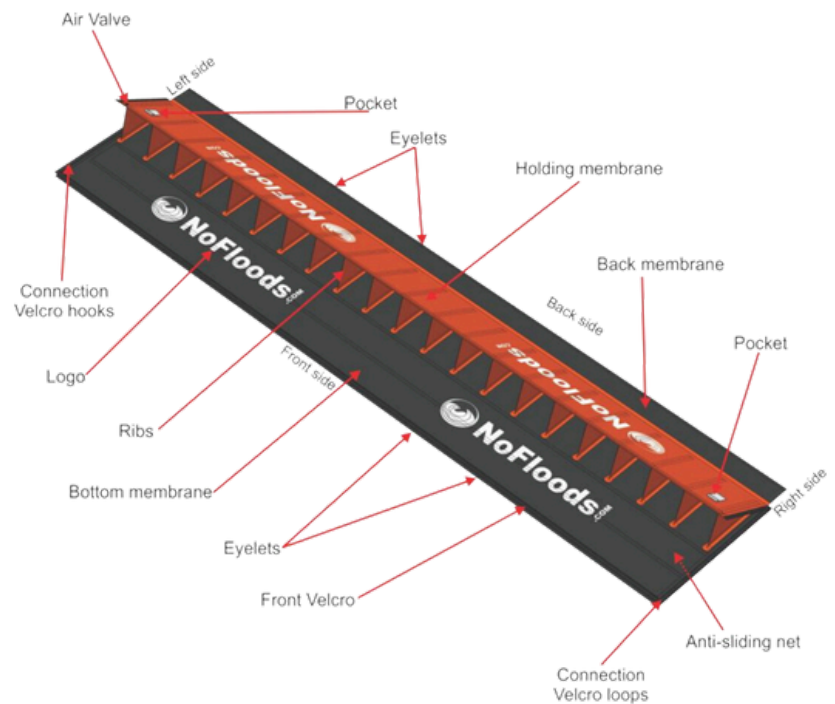
The NoFloods FlexGuard can be extended via its specially designed velcro connector strips, allowing you to customize the barrier length to suit any requirement. This innovative feature ensures a secure, continuous barrier.

NoFloods FlexGuard

Components

The NoFloods FlexGuard excels by its smart and innovative design making deployment easy and fast as well as enhancing barrier stability and integrity.

The surface area of the FlexGuard that contacts the ground is four times larger than its water retention height. This creates a vertical force that is four times greater than the horizontal pressure, ensuring strong adherence to the ground.



Concept

The concept behind the FlexGuard is straightforward: water fills the open side of the barrier while simultaneously exerting pressure on the base, securing the barrier in place.

The speed or direction of the water matters less, as it is the water pressure that causes the wall to open and rise. Regardless of the flow rate or direction of the water, the FlexGuard utilizes the force exerted by the water to activate automatically, providing effective flood protection.





Installation Guide

Deployment, Extension & After Use

1

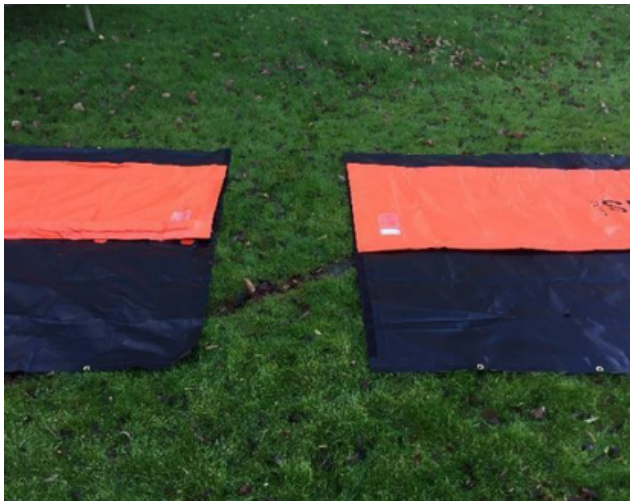
Barrier Orientation

Place the FlexGuard at the chosen location and unroll it on the ground, ensuring there is sufficient distance from the structure it's protecting. If repositioning is needed, it can be pulled by hand. However, moving long, connected sections is challenging and time-consuming, so it is advisable to carefully assess the deployment area in advance.

2

Unfold and Secure

Fully unfold the NoFloods FlexGuard on the ground and secure the front flap by placing weights on it. This enhances stability and reduces the risk of seepage underneath the wall. For deployment on seepage prone surfaces or in windy conditions it is recommended to attach the NoFloods Weight Belt and/or the NoFloods Extension Membrane.



Extension of Barriers

3

To extend the FlexGuard, connect two fully unfolded sections at the specially designed extension velcro strips visible at each end of the barrier. Ensure that the connection is made on dry land, as attempting to connect the walls in water can be problematic, especially if temperatures are below freezing. A level surface is required, particularly under the ends of the FlexGuards being joined.



4

After Use

When the water recedes and the FlexGuard is no longer required, it is advisable to clean it with fresh water and allow it to dry before storage. To clean and dry the FlexGuard, use the straps located every 1.50 meters along the bottom of the wall. Once the barrier is clean and completely dry, it can be folded and rolled up.



NoFloods FlexGuard

Positioning of the Barrier

Positioning Above Water Level

The ends of the FlexGuards are not closed, hence they must be positioned above the water level. As water can move freely within the FlexGuard, it is crucial to ensure that both the front and back of the barrier are elevated above the highest expected flood level.



Forming Curves and Bends

The FlexGuard is designed to be flexible, allowing for deployment in curves and bends to suit a wide range of protection needs, including the ability to fully encircle buildings and other structures. To ensure seamless transitions at sharp angles, such as 90-degree turns, we have developed specialized inward and outward corner pieces.



Applications

The NoFloods FlexGuard offers versatile applications across various settings, providing effective solutions for numerous scenarios. For optimal use and maintenance of the FlexGuard, always refer to the user manual for detailed instructions and guidelines. The manual provides essential information on setup, cleaning, and storage to ensure the longevity and effectiveness of the barrier.





Contact Us



Hareskovvej 17i
4400 Kalundborg Denmark



+45 53 79 20 87



+4570707482



info@nofloods.com



www.nofloods.com

NoFloods FlexGuard

Appendix

This appendix includes technical specifications for the most commonly used NoFloods FlexGuard models and accessories, providing key details such as dimensions and weights. It is intended to support efficient selection, planning, and deployment in typical use cases.

Please note that additional products, variants, and custom solutions are available upon request. For tailored configurations or project-specific needs, we encourage you to contact a NoFloods representative.



Appendix

Models

NOFLOODS FLEXGUARD MODELS

The NoFloods FlexGuard is available in three retention heights (25 cm to 100 cm) and standard lengths of 5 to 10 meters, all of which can be easily extended using the velcro connector strips.



Product Name	Product ID	Retention Height (cm)	Working Dimensions L x W x H (cm)	Packed Dimensions L x W x H (cm)	Product Weight (Kg)
NoFloods Extension Membrane, 5-meter	AS-FW21	25	5 x 115 x 25	50 x 45 x 40	11,6
NoFloods FlexGuard 25, 10-meter section	AS-FW21	25	10 x 115 x 25	64 x 58 x 45	21
NoFloods FlexGuard 50, 5-meter section	AS-FW41	50	5 x 236 x 50	63 x 40 x 40	21
NoFloods FlexGuard 50, 10-meter section	AS-FW42	50	10 x 236 x 50	63 x 70 x 55	40
NoFloods FlexGuard 100, 5-meter section	AS-FW61	100	5 x 400 x 100	80 x 58 x 40	38
NoFloods FlexGuard 100, 10-meter section	AS-FW62	100	10 x 400 x 100	80 x 65 x 50	67

Note:

NoFloods FlexGuard 25 – With a protection height of 25 cm the barrier is ideal for protecting houses, private or industrial property, and infrastructure in cases of minor flooding scenarios.

NoFloods FlexGuard 50 – With a protection height of 50 cm the barrier is designed for protecting infrastructure, coastal protection, dikes, etc during moderate flood scenarios.

NoFloods FlexGuard 100 – With a protection height of 1 m the barrier provides strong protection for infrastructure, coastal protection, dikes, etc during severe flood scenarios.

Appendix

Accessories

The NoFloods accessories improves the barrier performance when deploying on seepage prone surfaces like gravel, sand grass etc as well as under windy conditions while enabling flexible layouts.

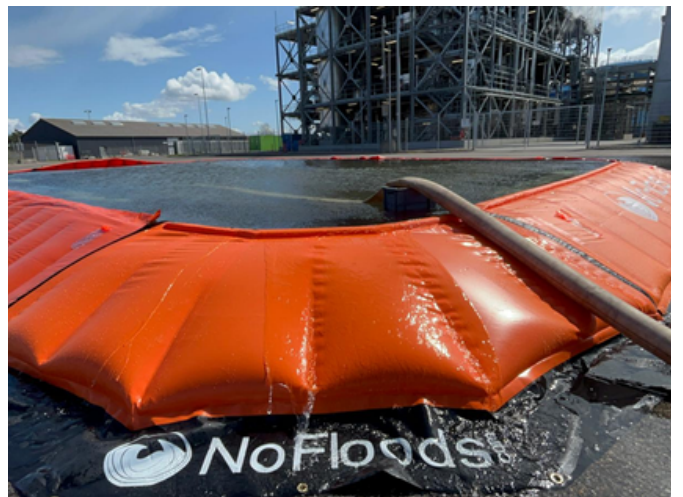
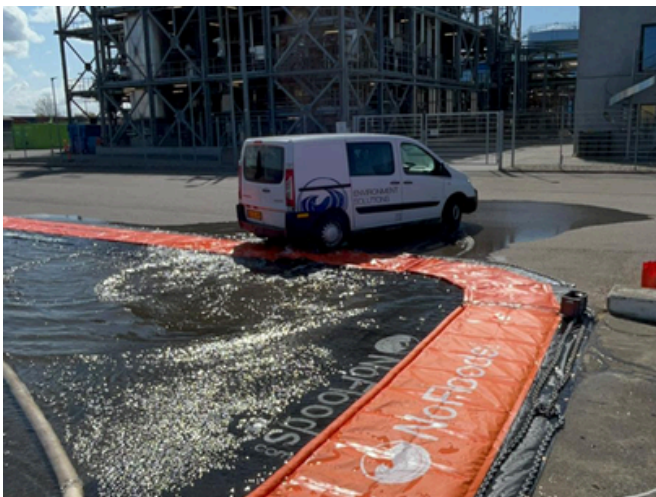
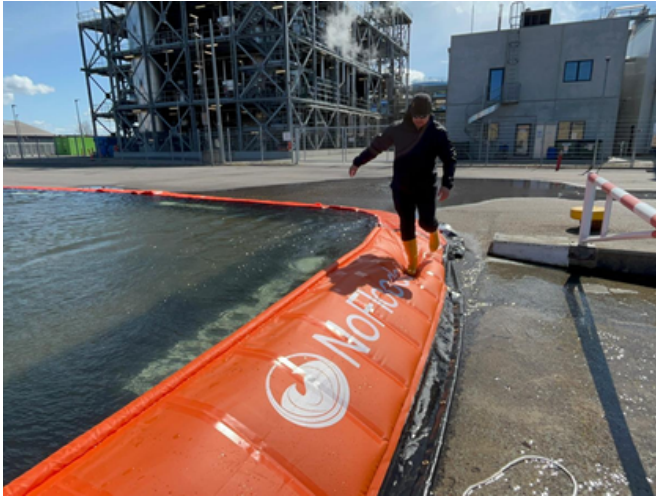
Note: All membranes are equipped with reinforced rings and Velcro fastenings for secure attachment.



Product Name	Product ID	Retention Height (cm)	Working Dimensions L x W x H (cm)	Packed Dimensions L x W x H (cm)	Product Weight (Kg)
NoFloods Extension Membrane, 5-meter	CP-MB3M	25	5 x 115 x 25	50 x 45 x 40	11,6
NoFloods Extension Membrane, 10-meter	CP-MB3N	25	10 x 115 x 25	64 x 58 x 45	21
NoFloods Weight Belt, 5-meter section AS-WB31	AS-WB31	50	5 x 236 x 50	63 x 40 x 40	21

Appendix

Contact Us



Hareskovvej 17i
4400 Kalundborg Denmark



+4570707482



info@nofloods.com



www.nofloods.com



+45 53 79 20 87

Should you have any questions or require further assistance, please do not hesitate to contact us. Our team is available to provide additional support and address any concerns you may have.